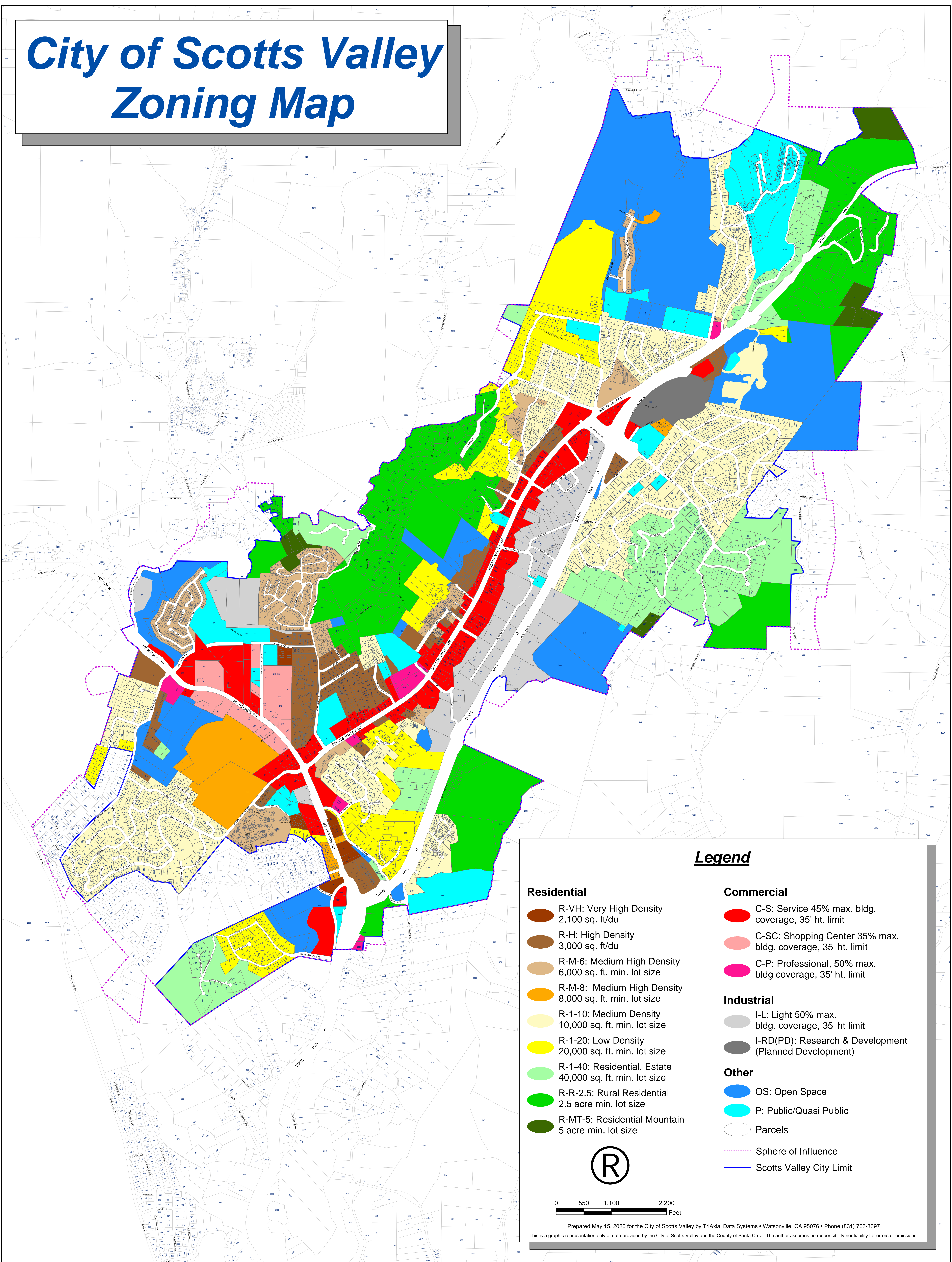


City of Scotts Valley Zoning Map



Legend

Residential

- R-VH: Very High Density
2,100 sq. ft/du
- R-H: High Density
3,000 sq. ft/du
- R-M-6: Medium High Density
6,000 sq. ft. min. lot size
- R-M-8: Medium High Density
8,000 sq. ft. min. lot size
- R-1-10: Medium Density
10,000 sq. ft. min. lot size
- R-1-20: Low Density
20,000 sq. ft. min. lot size
- R-1-40: Residential, Estate
40,000 sq. ft. min. lot size
- R-R-2.5: Rural Residential
2.5 acre min. lot size
- R-MT-5: Residential Mountain
5 acre min. lot size

Commercial

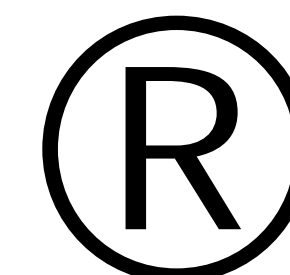
- C-S: Service 45% max. bldg. coverage, 35' ht. limit
- C-SC: Shopping Center 35% max. bldg. coverage, 35' ht. limit
- C-P: Professional, 50% max. bldg coverage, 35' ht. limit

Industrial

- I-L: Light 50% max. bldg. coverage, 35' ht limit
- I-RD(PD): Research & Development (Planned Development)

Other

- OS: Open Space
- P: Public/Quasi Public
- Parcels
- Sphere of Influence
- Scotts Valley City Limit



0 550 1,100 2,200
Feet